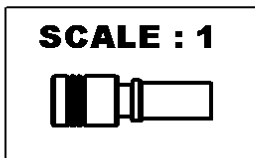
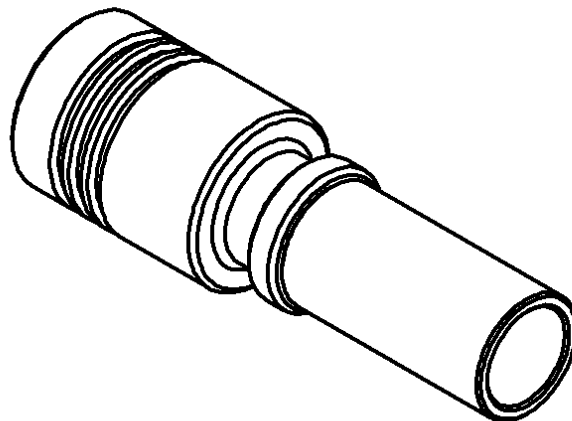
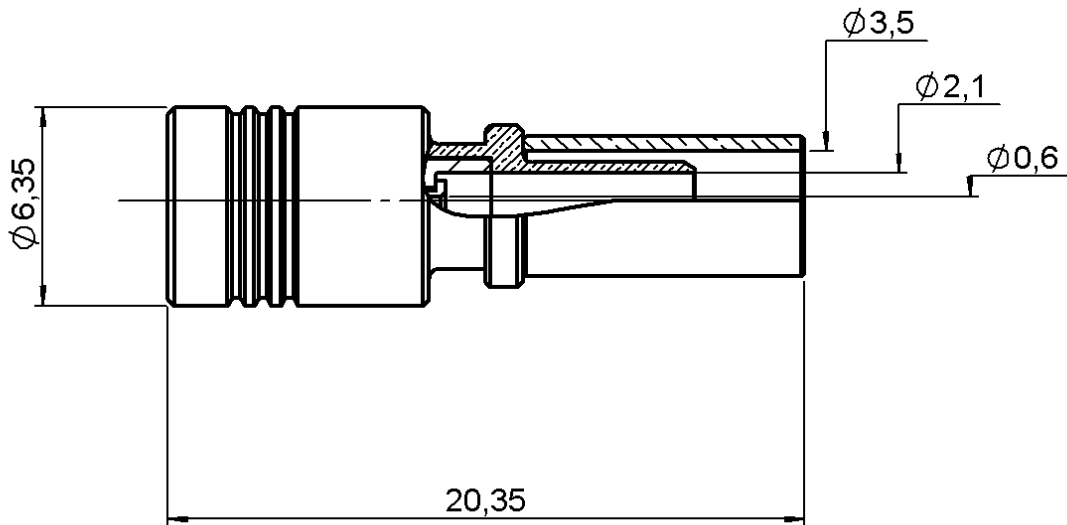


**STRAIGHT PLUG FULL CRIMP TYPE**

**CABLE ST212 PACK20**

**R114.086.100**

Series : SMB



All dimensions are in mm.



COMPONENTS	MATERIALS	PLATINGS ( $\mu\text{m}$ )
BODY	BRASS	GOLD 0.2 OVER NICKEL 2
CENTER CONTACT	BERYLLIUM COPPER	GOLD 1.3 OVER NICKEL 2
OUTER CONTACT	BERYLLIUM COPPER	GOLD 0.5 OVER NICKEL 2
INSULATOR	PTFE	
GASKET	-	
OTHERS PARTS	BRASS	GOLD 0.2 OVER NICKEL 2
-	-	-
-	-	-

Issue : 0343 B

In the effort to improve our products, we reserve the right to make changes judged to be necessary.



**STRAIGHT PLUG FULL CRIMP TYPE**

**R114.086.100**

**CABLE ST212 PACK20**

Series : **SMB**

**PACKAGING**

Standard	Unit	Other
<b>20</b>	<b>'W' option</b>	<b>Contact us</b>

**SPECIFICATION**

**ELECTRICAL CHARACTERISTICS**

Impedance		<b>50</b> Ω
Frequency		<b>0-4</b> GHz
VSWR	<b>2 +</b>	<b>0.000</b> x F(GHz) Maxi
Insertion loss		<b>0.1</b> $\sqrt{F}$ (GHz) dB Maxi
RF leakage	- (	<b>57</b> - F(GHz)) dB Maxi
Voltage rating		<b>335</b> Veff Maxi
Dielectric withstanding voltage		<b>1000</b> Veff mini
Insulation resistance		<b>1000</b> MΩ mini

**CABLE ASSEMBLY**

Stripping	a	b	c	d	e	f
mm	2.50	5.40	11.0	0.00	8.50	0.00

Assembly instruction :

Recommended cable(s)  
ST 212

Characteristics indicated on this data sheet are those that can be achieved with the highest performance cable. Intrinsic limitations of the cable may diminish the performance of the assembly

Cable retention

- pull off	<b>50</b> N mini
- torque	<b>NA</b> N.cm

**MECHANICAL CHARACTERISTICS**

Center contact retention		
Axial force – Mating end	<b>10</b>	N mini
Axial force – Opposite end	<b>10</b>	N mini
Torque	<b>NA</b>	N.cm mini

Recommended torque		
Mating	<b>NA</b>	N.cm
Panel nut	<b>NA</b>	N.cm
Clamp nut	<b>NA</b>	N.cm
A/F clamp nut	<b>0.000</b>	mm

Mating life	<b>500</b>	Cycles mini
Weight	<b>2.634</b>	g

**TOOLING**

Part Number	Description	Hexagon
.	.	.
R282.281.000	CRIMPING TOOL	2x4 (pos. 3)
R282.983.000	POSITONER FOR CRIMPING TOOL	-
R282.271.000	CRIMPING TOOL	3.84
R282.293.000	CRIMPING TOOL	M22520/5-01
R282.235.037	CRIMPING DIES	M22520/5-37

**ENVIRONMENTAL**

Operating temperature	<b>-65/+165</b>	° C
Hermetic seal	<b>NA</b>	Atm.cm3/s
Panel leakage	<b>NA</b>	

**OTHERS CHARACTERISTICS**

-

Issue : **0343 B**

In the effort to improve our products, we reserve the right to make changes judged to be necessary.



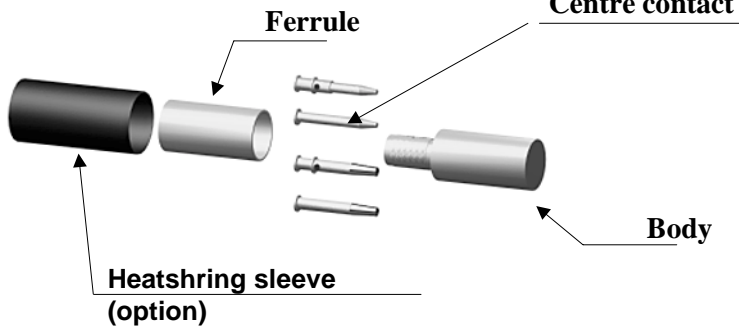
**STRAIGHT PLUG FULL CRIMP TYPE**

**R114.086.100**

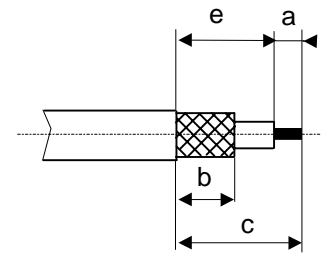
**CABLE ST212 PACK20**

Series : SMB

**COMPONENTS**

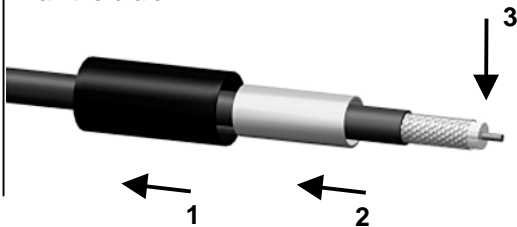


**STRIPPING DIMENSIONS**



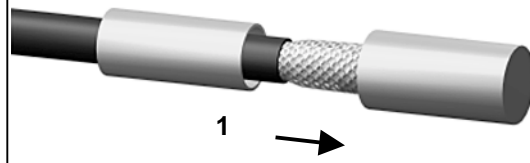
**1**

Slide ferrule onto cable  
Strip the cable  
Remove the foil between the braid and the dielectric  
Fan the braid



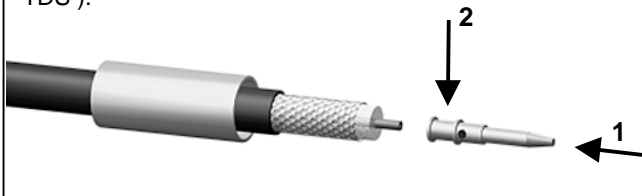
**4**

Slide the cable into the body until it bottoms against insulator.



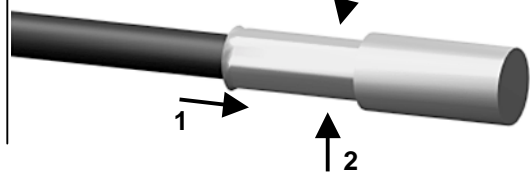
**2**

Slide the centre contact on until it bottoms against the cable dielectric.  
Crimp the centre contact with crimping tool ( see connector TDS ).



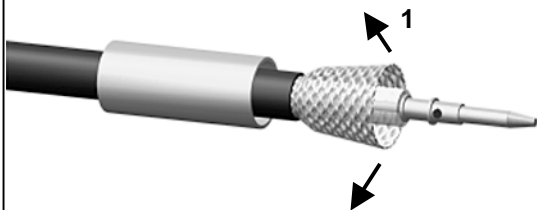
**5**

Slide the ferrule over the braid.  
Crimp the ferrule with crimping tool ( see connector TDS ).



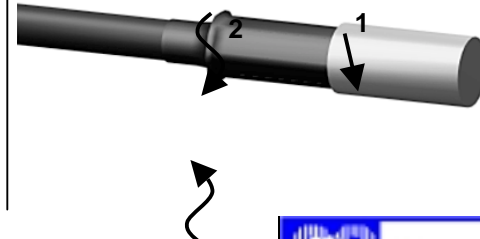
**3**

Fan the braid.



**6**

Cut the excess of braid if necessary.  
Slide the sleeve over the ferrule and heatshrink it in place (Option).



Issue : 0343 B

In the effort to improve our products, we reserve the right to make changes judged to be necessary.

